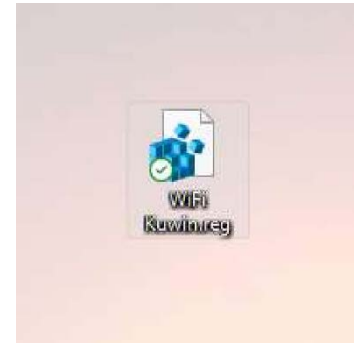


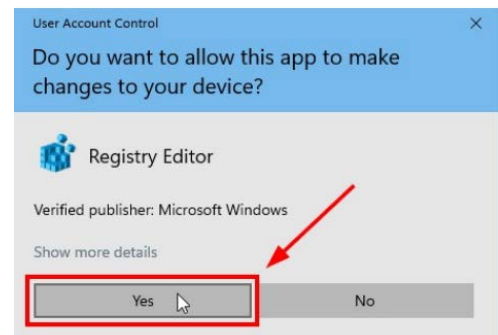
How to Troubleshoot KUWIN WiFi Connection in MS Windows 10/11

After updated to version 22H2

1. Download file WiFi Kuwin.reg at <https://bit.ly/3OROC00> (Log in with account @ku.th only). Then double click to open file.



2. If the screen shows this box. Click "Yes"



3. Windows will require you to confirm adding information from WiFi Kuwin.reg File, click "Yes". Once the adding process is completed, click "OK" to close the box. Then re-login or reboot your device once. The WiFi KUWIN will run normally.

